



THSA



TEXAS HEALTH SERVICES AUTHORITY

Governance and Finance Work Group 3rd Meeting

May 27, 2010

2:00–3:30 PM CST

Agenda

- Finalize initial governance model
- Introduce concept of what constitutes an HIE
- Preparation for next meeting (June 8)
- Open discussion

Governance Model:

The State's Role

Through HITECH, ONC identifies that the state has a key role to play in HIE deployment in order to achieve critical information sharing across the healthcare system:

1. Define governance entity role and functions:

Establish a convening and coordination structure, including personnel and processes for maintaining transparency and generating multi-stakeholder buy-in and trust required to foster public–private collaboration

Governance Model:

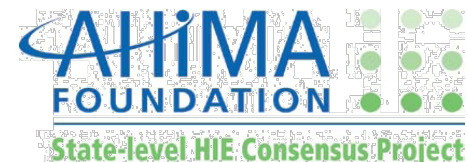
The State's Role, cont.

2. Define accountabilities, oversight provisions, and protocols:

Establish mechanisms to ensure that milestones for interoperability are met

Key HIE-Related Roles and Functions: Overview

State Government Executive, legislative, agencies HIE Coordinator**	State level HIE Governance Entity (Government hosted, sponsored, or authorized formal public-private organizational structure)		SLHIE Governance Entity, its Subsidiary, and/or via Contracted HIE Operator
Policy/Oversight/Accountability	Convening/consensus	Coordinating	Technical HIE Operations
<p>Set health policy goals (reform priorities)</p> <ul style="list-style-type: none"> HIE as part of policy agenda <p>Endorse statewide HIE plan</p> <ul style="list-style-type: none"> Ensure adequate stakeholder input Allocate resources <p>Statutory/regulatory mechanisms</p> <ul style="list-style-type: none"> Agency support/ in HIE Plan incentives for industry HIE participation Align confidentiality protections Authorize HIE governance model Authorize state HIE funding/mech. <p>Direct State Agency HIE policy and program development/coordination</p> <ul style="list-style-type: none"> Medicaid, public health, state employees HIE participation <p>Assess progress w/statewide HIE development</p> <ul style="list-style-type: none"> Monitoring and evaluation Public reporting <p>** HIT Coordinator facilitates internal state government HIT/HIE, HIE policy, liaison to public/private governance</p>	<p>Organizational leadership, operations</p> <ul style="list-style-type: none"> Trusted neutral venue for stakeholder participation Support board, committee, other public/private stakeholder participation structures Facilitate stakeholder consensus Manage finances, business ops <p>Expertise, information, relationships</p> <ul style="list-style-type: none"> Monitor and inform re HIE development (all levels) Forge effective working relationships Facilitate consumer input and public communication <p>Facilitate collaborative development of public policy options to advance HIE</p> <ul style="list-style-type: none"> Inform agencies/policy makers/stakeholders about needs and opportunities Provide analysis/ implications of policy options under consideration 	<p>Facilitate statewide HIE implementation</p> <ul style="list-style-type: none"> Address barriers, mitigation Lead HIE Plan development implementation <p>Facilitate state alignment with interstate, regional, and national HIE strategies</p> <ul style="list-style-type: none"> Lead/participate in collaborative HIE development initiatives <p>Promote standards, consistent HIE policies, practices</p> <ul style="list-style-type: none"> Diffuse prevailing national standards Develop consensus for statewide data sharing Monitor, enforce HIE policies <p>Contribute HIE perspectives and expertise to ongoing healthcare reform efforts</p> <ul style="list-style-type: none"> Foster collaborative public/private approaches to harmonize healthcare quality improvement efforts 	<p>Own or manage contracts for hardware, software, and technical capacity to facilitate statewide HIE:</p> <ul style="list-style-type: none"> Infrastructural components (e.g., Master Patient Index, Record Locator Service, Interfaces, Data Repositories etc.), Applications (e.g., Meaningful Use Reporting, Business and Clinical Decision Support, Clinical Systems, etc.), Services (e.g., implementation guides / supports, standards, workflow optimization, coordination with REC)



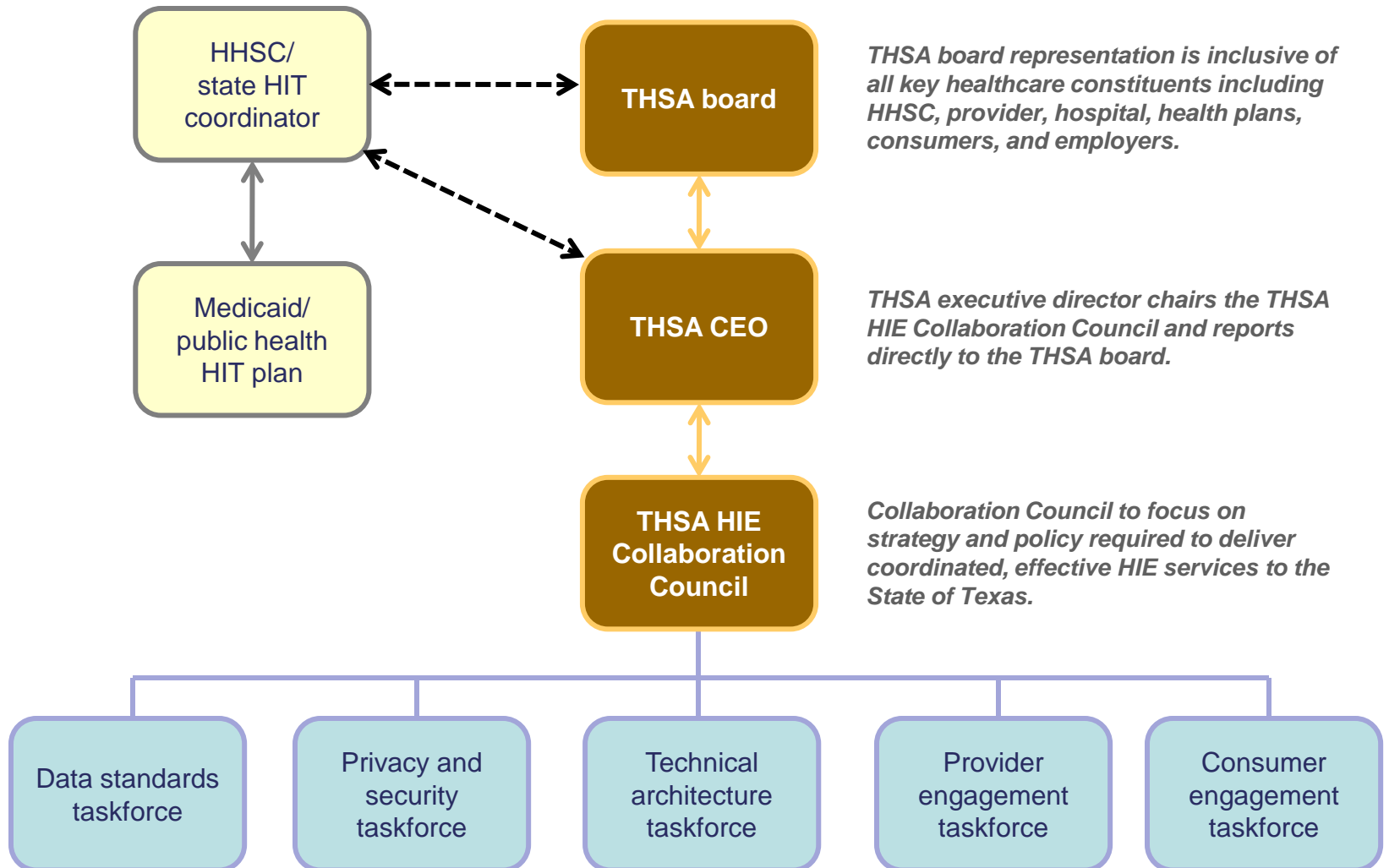
Principles and Key Points to Consider

- **ONC has dictated a role for the state to play in HIE development and sustainability**
- **State government is expected (at a minimum) to coordinate activities across Medicaid and state public health programs, so as to avoid duplication of efforts and ensure integration and support of a unified approach to information exchange**
- **Texas has not earmarked general revenue funds to build and sustain HIEs**
- **THSA was established as a public–private partnership outside of the direct control of the state government**
- **The governance function will continue to evolve and mature to support the ongoing needs of the State of Texas**

Proposed THSA Governance Model

- 1. THSA as public–private partnership:** Govern HIEs within Texas (after plan adopted)
 - Not-for-profit
 - Conform bylaws
 - Conform appropriate representation based upon key constituents
- 2. Collaboration Council:** Focus on coordination role and provide recommendations to THSA board on strategy and policy
- 3. Ongoing Taskforce/Committee Roles:** Monitor implementation of strategic/operational plans, detail work specific to established charters

Proposed THSA Governance Model



Texas HIT Roles and Responsibilities: *Future*

Entity	Role
THSA Board	Provides policy and strategy recommendations to the (governor or HHSC) regarding HIE adoption within the State of Texas. Decision-making body for HIE coordination across the state.
THSA CEO	Chairs THSA HIE Collaboration Council. Reports to THSA board. Develops and manages THSA strategic and operational plans. Provides advice and council to state HIT efforts.
HHSC	Policy oversight and accountability from a state regulatory perspective. Medicaid HIT strategy and operations. Coordination with THSA to achieve efficiencies and limit redundant services.
Public Health (DSHS)	Coordination of public health initiatives with HIE.
THSA HIE Collaboration Council	Coordination body for statewide HIE implementation. Provides recommendations on HIE policy and strategy to THSA board.
Data Standards Taskforce	Monitors federal data standards direction. Recommends Texas' implementation approach of federal data standards.
Privacy & Security Taskforce	Monitors federal- and state-level policy and regulation. Provides feedback to THSA for input into policy and regulation processes within the State of Texas.
Technical Infrastructure Taskforce	Continues to provides advice and direction to THSA for ongoing technical architectural needs.
Consumer Engagement Taskforce	Continues to provide advice and direction to THSA for ongoing programs supporting consumer engagement.
Provider Engagement Taskforce	Continues to provide advice and direction to THSA for ongoing programs supporting provider engagement.

THSA HIE Collaboration Council:

Council's Proposed Composition

Council Representative	Role
THSA CEO	Council chair, reports to the THSA Board
HIE representatives	One representative per sanctioned regional/local HIE, provides input from regional/local HIE to ensure coordinated approach to HIE implementation and operations within the State of Texas
HIT coordinator	Provides linkage to state HIT plan
Public health (DSHS)	One individual to represent the interests of public health
Provider representative	One individual designated by the Texas Medical Association
Hospital representative	One individual designated by the Texas Hospital Association
Health Plan representative	One individual designated by the Health Plan Association
Consumer representative	One individual to represent the interests of the consumer in HIE
REC representatives	One individual per approved REC to represent the interests of their constituents

Next Steps: Governance

1. Develop HIE requirements list:
What constitutes an HIE?

eHI Stages of HIE Development

Stage 1	Recognition of the need for health information exchange among multiple stakeholders in your state, region or community. (Public declaration by a coalition or political leader.)
Stage 2	Getting organized; defining shared vision, goals, and objectives; identifying funding sources, setting up legal and governance structures. (Multiple, inclusive meetings to address needs and frameworks.)
Stage 3	Transferring vision, goals, and objectives to tactics and business plan; defining your needs and requirements; securing funding. (Funded organizational efforts under sponsorship.)
Stage 4	Well under way with implementation: technical, financial, and legal. (Pilot project or implementation with multi-year budget identified and tagged for a specific need.)
Stage 5	Fully operational health information organization; transmitting data that is being used by healthcare stakeholders.
Stage 6	Fully operational health information organization; transmitting data that is being used by healthcare stakeholders; have a sustainable business model.
Stage 7	Demonstration of expansion of organization to encompass a broader coalition of stakeholders than present in the initial operational model.

AHIMA: HIM RHIO Checklist

Stage 1: Formation	<ol style="list-style-type: none">1. Select stakeholder group2. Identify the goals of the group3. Define governance structure4. Choice of legal entity5. Identify initial funding sources and financial model for sustainability
Stage 2: Design	<ol style="list-style-type: none">1. Engage stakeholder group in establishing organizational structure2. Identify RHIO structure3. Educational strategy4. Data considerations5. Identification of best practices/lessons learned6. Design of access, use, disclosure, and retention7. Design community buy-in to RHIO
Stage 3: Implementation	<ol style="list-style-type: none">1. Interoperability2. Data elements/content issues3. Implement process opt in/opt/out4. Implement access, use, disclosure, and retention policy and practices5. Stakeholder/consumer education6. Implement communication plan7. Implement data map8. Data integrity9. Data reporting10. Data sharing11. Carefully stage the implementation to assure the realization of the full vision following the launch12. Evaluate the effectiveness of the RHIO

AHIMA: RHIO Building Blocks

Prepare strategic plan	<ol style="list-style-type: none">1. Government model and legal entity2. Business model (initial funding sources, ongoing funding sources, return on investment analysis, organizational structure)3. Clinical data-sharing model4. Access and authentication model5. Technical model
Analyze contributor sources and systems to HIE	<ol style="list-style-type: none">1. Determine data sources2. Perform gap analysis across sources
Develop detail functional and system requirements	<ol style="list-style-type: none">1. Architectural design and network topology2. Define patient demographic data to be stored (if applicable)3. Determine reporting requirements4. Scope clinical data to be exchanged, both long-term and short-term
Develop detailed project plan	<ol style="list-style-type: none">1. Staffing selection (design, build support, training, data maintenance)2. Network configuration3. System design and build4. Application build5. Interface design6. Design user access, authorization, and administration
Implement system	<ol style="list-style-type: none">1. Design2. Develop privacy, security, and data retention policies and procedures3. Build4. Training5. Test (unit, functional, regression, integration, audit logs, reports)6. Data integration and linking evaluation
Go live	<ol style="list-style-type: none">1. Audit trail monitoring (authentication, access, breach assessment)2. Production testing (functional, regression, integration)3. Follow-on training

HIE: CCHIT Certification Criteria

- Patient data matching capabilities
- Summary patient record exchange
- Data integrity and non-repudiation checking
- Audit logging and error handling
- Support for secondary use of clinical data
- Consumer services
- Support of consumer information location requests
- Management of consumer choices in services
- Consumer access to audit logging and disclosure

HIE: CCHIT Certification Criteria, *cont.*

- Routing of consumer requests for data corrections
- User and subject identity management
- Support of HIE-level managed identities
- Portal access
- Demographic provider matching
- Management services
- Intrusion defense
- Vulnerability defense
- System defense
- User defense

HIE: CCHIT Certification Criteria, *cont.*

- Physical environment (perimeter violations)
- Privilege management
- Emergency access processes
- EHR: Lab results reporting
- Biosurveillance: Connect to clinical care
- Consumer empowerment: Medication history
- ePrescribing
- Inter-physician clinical memos
- Clinical document exchange management
- Continuity of care document

Potential Requirements for Texas HIE

- Governance model in place
- Strategic and operational plans developed
- All constituents are represented and included
- Technical model embraces accepted and emerging interoperability standards
- Collaboration/coordination with:
 - THSA
 - NHIN
 - Medicaid
 - Public health
 - Regional extension centers (RECs) and other ARRA programs
 - Other HIEs

Potential Requirements for Texas HIE, *cont.*

- Service offering will enable providers to achieve meaningful use
- Patients' needs at the center of the model
 - Privacy and security
 - Data available across healthcare systems
- Security and privacy policies and procedures are in place and aligned with state and Federal regulations
- Sustainability model exists and seems reasonable

Objectives for Next Meeting (June 8)

- Review attributes of an HIE
- Review progress of other work groups and the impact on implementation priorities
- Introduce sustainability models

Open Discussion



Thank you!